

॥ श्री गणेशाय नमः ॥
॥ श्री जनकीवल्लभो विजयते ॥



AARADHYA REALITY

Opp. Pandit Dindayal Upadhyay
Nagargruh, Near Amardeep Homes,
Ajwa Road, Vadodara-19

FOR ENQUIRY:
99099 63464
1800 572 7191

ARCHITECT



STRUCTURE

ASHOK SHAH
& ASSOCIATES

3D DESIGN

I M A G I N E
studio



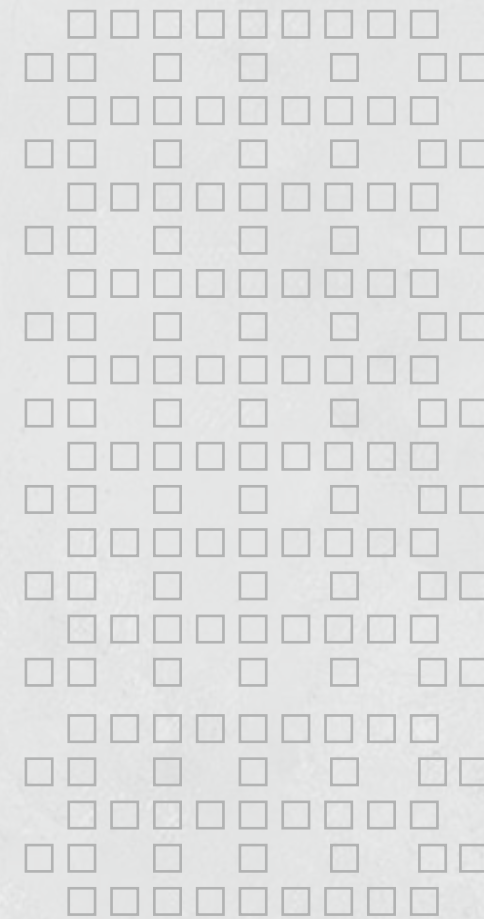
LOCATION



WEBSITE

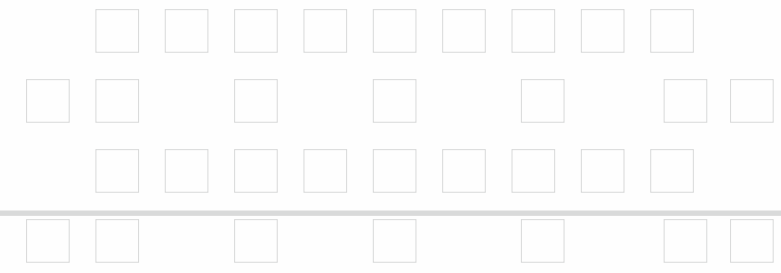


E-BROCHURE



AMARDEEP LANDMARK

2 & 3 BHK FLATS



LANDMARK OF HAPPINESS



STARTED IN 1987, AMAR GROUP TILL NOW HAS DONE A LOT OF LANDMARK PROJECTS, CONSOLIDATING THE IDEA OF DELIVERING AFFORDABLE PREMIUM QUALITY HOMES.

When Amar Group was started, Vadodara was called Baroda, and was a much different city than what it is today. The demands were different, the processes were different, but with time Amar Group has evolved itself to become one of the pioneer builder groups of the city.



Amardeep Landmark is an upscale premium residential complex that offers 2 and 3BHK apartments, each designed to maximize space and views. Conceived as a modern residential project, Amardeep Landmark aims to seamlessly integrate community living with the many modern amenities within the complex.



LANDMARK OF CONVENIENCE

Everyone deserves to be pampered a little in life. At Amardeep Landmark, you will experience an exclusive invitation to a comfortable and cosy lifestyle. Every square feet at Amardeep Landmark has been well-thought out to elevate modern living. From the well-planned rooms to the spectacular amenities, everything here boasts of urban lifestyle.



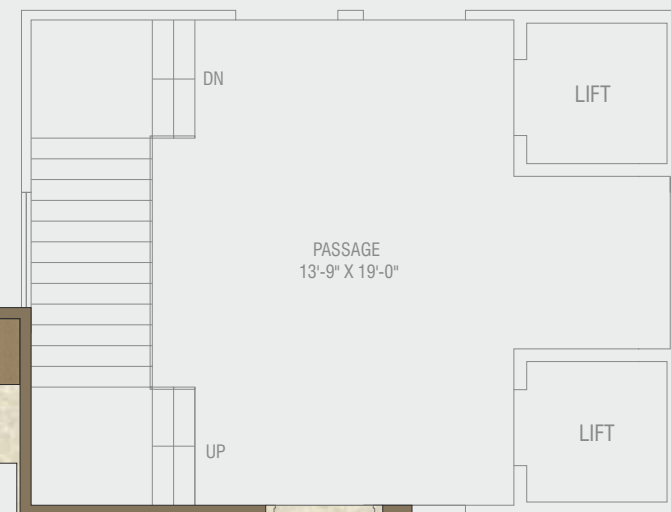
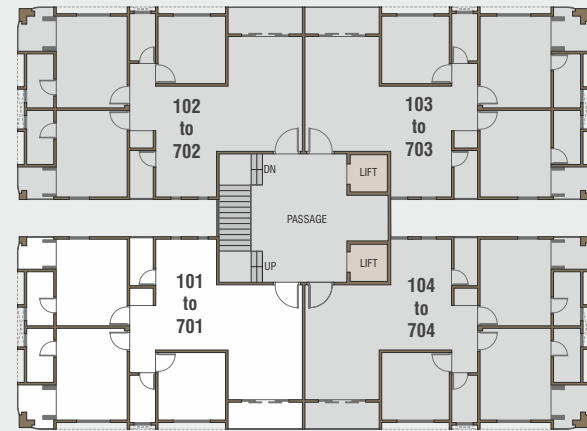
LANDMARK OF
SOPHISTICATION

LAYOUT PLAN



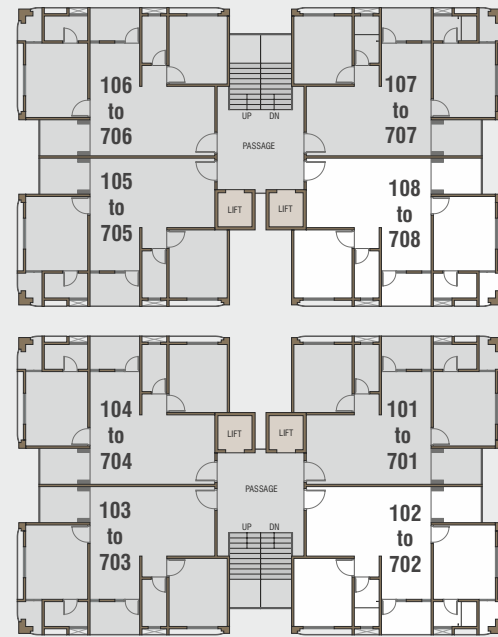
3 BHK

TOWER: D & E



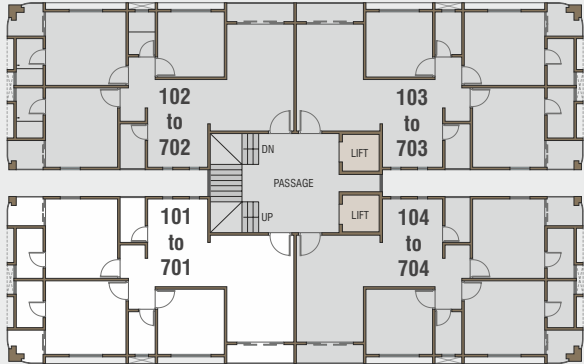
2 BHK

TOWER: G1, G2 & K1, K2



3 BHK

TOWER: I





LANDMARK OF SERENITY

Amardeep Landmark has been designed to elevate peace, comfort, and well-being. Every square feet at Amardeep Landmark has been well-thought out to elevate community lifestyle experience. Everything you see here is exclusively picked to suit your sense of aesthetics. From the flooring to the ceiling, from the clubhouse to gym, every detail is crafted with utmost care and perfection.





LANDMARK OF PLEASURE

Amardeep Landmark is thoughtfully designed for you and your loved ones to relax and rejuvenate and find fun and leisure every single day. Watch your kids bloom with a wide array of kid amenities here. Live the best life at Amardeep Landmark.

AMENITIES

- Elegant Entrance Gate With Security Cabin
- Designer P.o.p. Ceiling With Led Lights In All Room
- Video Door Security System For Each Flat
- R.o. System For Each Flat
- Electric Geyser In All Bathroom
- Sufficient Car Parking For Residents
- Power Back-up For One Lift, Passage & Parking Area
- Solar Panel On Common Lighting Area
- Single Entry Campus With C.C.T.V
- Chimney Provided In Each Flat
- Aluminum Powder Coated Window With Mosquito Net



LEISURE AMENITIES (PHASE 1 & 2)

- | | | | |
|---|-------------------------------------|---|----------------------------------|
|  | Fully A.C. Club House |  | Jogging Track |
|  | Landscaped Garden |  | Gazebo and Water body |
|  | Senior Citizen Park |  | Central A.C. Home Theatre |
|  | Children Play Area |  | Fully A.C. Gymnasium |
|  | Fully A.C. Indoor Games Zone | | |

SPECIFICATION

Structure :

R.C.C Frame Structure With Earthquake Resistance As per Structure Engineer's Design.

Masonry:

FLY ASH Brick Walls

Wall Finish :

Inside walls having smooth plaster with emulsion paints and outside surface acrylic painted

Flooring :

Vitrified flooring in all rooms

Doors :

Decorative main door with safety lock and other are flush doors with safety lock

Windows :

Powder coated aluminum windows with glass and safety grills

Kitchen :

Granite sandwich platform with S.S sink, Glazed tiles dedo upto slab level

Toilets :

Designer bathrooms tiles with branded fitting

Plumbing :

Concealed plumbing with good quality fittings

Water :

Underground & Overhead tank for 24 hours water supply from VMC connection with auto control mechanism.

Boring facility for 24 hour water supply.

Electrification :

Concealed copper ISI wiring & branded modular switches with sufficient point.

A.C. point in all Bedroom.

Terrace :

Water proofing treatment with china mosaic tiles flooring

LOCATION MAP



EXPECT MORE
OF CONVENIENCE



Payment Terms

05% Booking Amount | 25% within fifteen days of booking | 10% Plinth Level | 15% 2nd slab | 15% 4th slab | 10% 6th slab | 10% 8th slab | 10% Finishing

PLEASE NOTE : Premium quality materials or equivalent branded products shall be used for all construction work. - Right of any changes in dimensions, design & specifications will be reserved with the developer, which shall be binding for all members. - External changes are strictly not allowed. - Documentation charges, stamp duty, all municipal taxes, G.E.B. meter deposit should be levied separate. - Each member needs to pay maintenance deposits separately. - In case of booking cancellation, amount will be refunded from the booking of same premise after deducting 10% of booking amount. - Possession will be given after one month of all settlement of account. - Extra work at the cost of client with prior estimate needs to be given in advance but no change in elevation and plan will be done. - The developer reserve the full right to make any changes. - This brochure does not form a part of agreement or any legal document, It is easy display of project only.

Above project is registered under Gujreera.

For further details: visit: www.gujreera.gujarat.gov.in under registered project. RERA REGISTRATION NO.: PR/GJ/VADODARA/VADODARA/Others/RAA10426/130722